



**FORTUNA**  
GLOBAL SUPPLY CHAIN SYSTEMS



**FORTUNA**  
GLOBAL SUPPLY CHAIN SYSTEMS



**FORTUNA**  
**EAM**



**Website:** [www.fortunaglobalsupplychain.com](http://www.fortunaglobalsupplychain.com)

**E-mail:** [info@fortunaglobalsupplychain.com](mailto:info@fortunaglobalsupplychain.com)

# FORTUNA GLOBAL SUPPLY CHAIN SYSTEMS

*“The Future of Enterprise Intelligence.”*

## Company Overview

Fortuna Global Supply Chain Systems is a next-generation enterprise technology company revolutionizing the global logistics and supply chain landscape.

With a vision to create **intelligent, transparent, and connected ecosystems**, Fortuna blends innovation, data intelligence, and automation to help businesses achieve supply chain excellence.

Established with the belief that **efficiency is the new currency**, Fortuna empowers organizations to manage operations smarter — from demand planning to last-mile delivery — through real-time insights and seamless digital integration.

We are not just a technology provider; we are **partners in transformation** — driving global supply chain optimization with precision, performance, and predictive intelligence.

## Fortuna EAM — “Enterprise Asset Management”

**Fortuna EAM** is a next-generation **Enterprise Asset Management platform** that enables organizations to manage, monitor, and optimize their physical assets throughout their lifecycle.

It provides a unified view of **assets, maintenance operations, performance analytics, and compliance management** — helping enterprises reduce downtime, extend asset life, and optimize operational costs.

By combining **IoT sensor data, AI-driven maintenance forecasting, and cloud-based collaboration**, *Fortuna EAM* empowers enterprises to make **proactive, data-backed asset decisions** across their global operations.



**Fortuna EAM** redefines enterprise asset management through:

- **IoT-enabled real-time asset monitoring**
- **AI-based predictive maintenance forecasting**
- **Automated work order & service management**
- **End-to-end lifecycle tracking and analytics**

It ensures that assets are not just managed — they are continuously optimized, aligned with **business continuity, sustainability, and performance goals**.

## ⚙️ 2. System Architecture

**Fortuna EAM** is built across five intelligent layers:

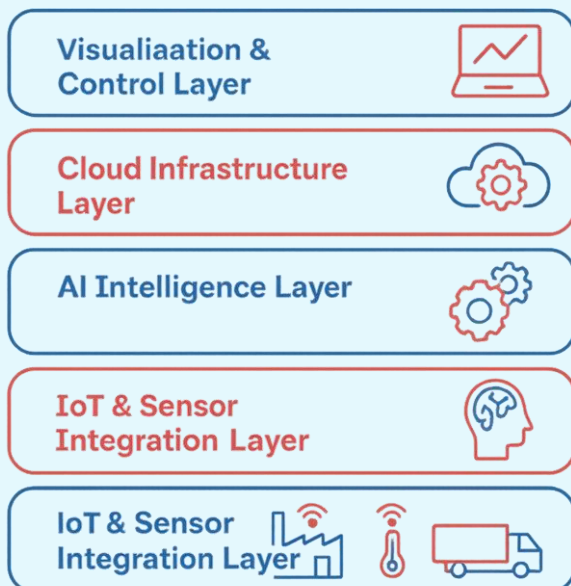
**1 IoT & Sensor Integration Layer** - Real-time monitoring of equipment , and facility data.

**2 Cloud Infrastructure Layer** – Secure SaaS framework hosted on AWS / Azure for global scalability.

**3 AI Intelligence Layer** – Predictive forecasting, failure detection, and maintenance forecasting.

**4 Visualization & Collaboration Layer** – Intuitive dashboards, reports, and mobile app interface.

### FORTUNA EAM



# Product Modules, Sub-Modules & Operational Functionality

## ⚙️ 1: Asset Registry & Lifecycle Management

### 📁 Submodules:

- **Asset Master Data Repository** – Stores complete lifecycle records for all assets.
- **Hierarchy & Classification Engine** – Categorizes assets by type, location, and function.
- **Depreciation & Valuation Tracker** – Calculates asset value over time.
- **Asset Lifecycle Workflow** – Tracks acquisition, operation, maintenance, and disposal.

### ⚙️ Operational Functionality:

- Centralized database for all enterprise assets.
- Tracks ownership, utilization, and asset health status.
- Supports digital on boarding and barcode/RFID asset tagging.
- Real-time updates on operational condition and lifecycle stage.

## 2: Maintenance Management

### Submodules:

- **Preventive Maintenance Scheduler** – Plans regular service activities.
- **Predictive Maintenance Engine** – Uses AI to forecast potential failures.
- **Work Order Management System** – Creates, assigns, and monitors maintenance tasks.
- **Technician Mobile Portal** – Real-time service updates from field operations.

### Operational Functionality:

- IoT-based failure prediction through sensor readings and analytics.
- Automated scheduling of preventive and predictive maintenance.
- Mobile-first field management for technicians.
- Reduced downtime through proactive alerts and scheduling optimization.

## 3: Performance & Reliability Analytics

### Submodules:

- **KPI Dashboard** – Displays uptime, MTBF (Mean Time Between Failures), and OEE.
- **Anomaly Detection Engine** – Identifies irregular performance trends.
- **Cost & Efficiency Tracker** – Monitors maintenance cost vs asset output.
- **Predictive Trend Analysis** – Suggests replacement or overhaul timelines.

### Operational Functionality:

- Provides visual analytics on asset performance and reliability.
- Uses AI to predict failure trends and optimize maintenance spend.
- Supports executive dashboards with customizable KPIs.

## ⚙️ 4: IoT Integration & Real-Time Monitoring

### 📁 Submodules:

- **IoT Device Gateway** – Connects sensors, PLCs, and machine controllers.
- **Condition Monitoring Dashboard** – Displays temperature, vibration, and runtime.
- **Alert & Threshold Engine** – Auto-triggers maintenance requests on anomalies.
- **Data Streaming Service** – Transfers real-time telemetry into the EAM database.

### ⚙️ Operational Functionality:

- Collects live data from connected devices across factories or fleets.
- Generates predictive alerts before breakdowns occur.
- Visualizes IoT data on centralized dashboards.
- Enhances asset visibility across multiple facilities.



## ⚙️ 5: Work Order & Resource Management

### 📁 Submodules:

- **Work Request Portal** – Enables users to submit repair/service requests.
- **Task Allocation Engine** – Assigns technicians based on skill and location.
- **Inventory & Spare Parts Sync** – Integrates with *Fortuna SIMS* for part availability.
- **SLA & Completion Tracker** – Monitors adherence to service-level commitments.

### ⚙️ Operational Functionality:

- End-to-end automation of work order lifecycle.
- Tracks spare part usage and costs per job.
- Ensures faster turnaround through technician routing optimization.
- Provides analytics on work efficiency and response time.

## 6: Compliance & Safety Management

### Submodules:

- **Regulatory Compliance Dashboard** – Manages audits, ISO standards, and certifications.
- **Incident Reporting Engine** – Tracks safety incidents and corrective actions.
- **Risk Assessment Matrix** – AI-based hazard probability analysis.
- **Document Control Hub** – Central repository for maintenance and safety documentation.

### Operational Functionality:

- Automates compliance checks and documentation for safety audits.
- Provides alerts for license expirations and inspection schedules.
- Enhances EHS (Environment, Health & Safety) visibility.
- Supports audit trails for government and corporate reporting.

## 7: Integration & Data Synchronization Layer

### Submodules:

- **ERP & Finance Integration** – Links asset depreciation and cost data to ERP systems.
- **SIMS & TMS Integration** – Connects asset usage and transport equipment data.
- **IoT & ConnectHub Sync** – Ensures unified communication across the Fortuna suite.
- **External Vendor APIs** – For OEM, service contractors, or warranty tracking.

### Operational Functionality:

- Real-time synchronization between EAM and other Fortuna systems.
- Enables unified reporting across supply chain and asset lifecycle.
- Ensures consistency in asset-related financial data.
- Simplifies collaboration with third-party service partners.

## Functional Workflows

### **A. Predictive Maintenance Workflow**

1. IoT Sensor Detects Anomaly
2. AI Predictive Engine Forecasts Failure
3. Auto-Generate Work Order
4. Technician Notification
5. Repair Execution
6. Asset Health Updated

### **B. Asset Lifecycle Workflow**

1. Asset Creation / Procurement From Vendors.
2. Operation & Monitoring
3. Preventive Maintenance
4. Depreciation & Cost Tracking
5. End-of-Life Disposal
6. Data Archived to Analytics

## Fortuna EAM Advantages

Feature	Business Value
<b><i>IoT-Based Predictive Maintenance</i></b>	Reduces Un Planned Down Time.
<b><i>End-to-End Lifecycle Management</i></b>	Maximizes asset utilization
<b><i>AI-Driven Failure Forecasting</i></b>	Enables proactive maintenance planning
<b><i>Centralized Asset Visibility</i></b>	Enhances accountability and control.
<b><i>Integration Across Fortuna Suite</i></b>	Ensures unified operational insights
<b><i>Regulatory &amp; Safety Automation</i></b>	Simplifies audits and compliance

## Industries Served

### Automotive & Industrial Manufacturing

**FGSCM** - supports the automotive sector with advanced logistics planning, vendor coordination, and predictive maintenance scheduling. From global parts movement to plant-level production support, our systems reduce lead times and enhance supply chain agility

# FORTUNA

GLOBAL SUPPLY CHAIN SYSTEMS

### Ports & Logistics

Fortuna supports the automotive sector with advanced logistics planning, vendor coordination, and predictive maintenance scheduling. From global parts movement to plant-level production support, our systems reduce lead times and enhance supply chain agility



## Food & Beverage Distribution



Freshness and safety are at the heart of Food & Beverage -supply chains. We enable end-to-end visibility with IoT-driven tracking, automated quality checks, and predictive demand planning—ensuring traceability from farm to fork.



## Fashion & Retail Industry

With High seasonal demand & agile supply chain Planning, Fortuna will empowers retailers with faster replenishment & reduces stock outs



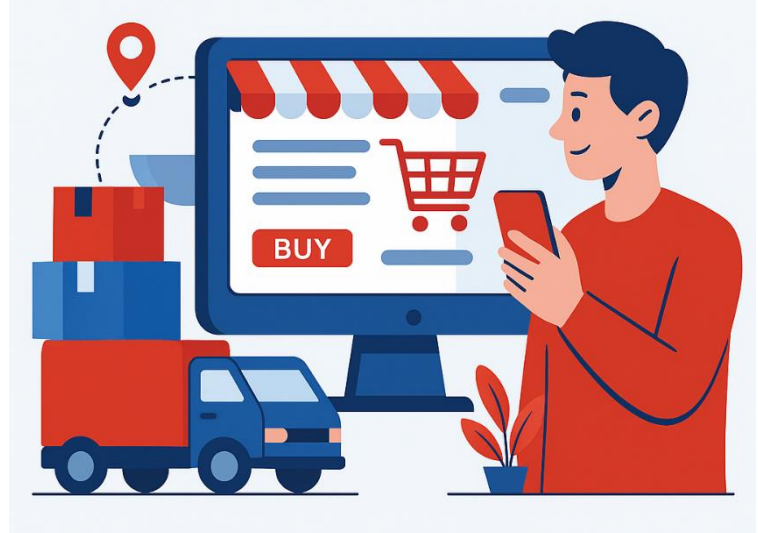
## Pharma & Healthcare



Medical safety and regulatory compliance are non-negotiable. We provide automated solutions for cold chain logistics, product traceability, and compliance monitoring—ensuring life-saving medicines and healthcare products reach destinations safely and efficiently.

## E-Commerce & Distributional Channels

In a fast-moving E-Com world, speed and efficiency are critical. Our platforms enable automated order management, demand forecasting, and last-mile delivery optimization—ensuring customers receive the right products, at the right time, every time.







## Corporate Identity



**Headquarters:** Visakhapatnam, Andhra Pradesh, India

**Website:** [www.fortunaglobalsupplychain.com](http://www.fortunaglobalsupplychain.com)

**Email:** [info@fortunaglobalsupplychain.com](mailto:info@fortunaglobalsupplychain.com)